

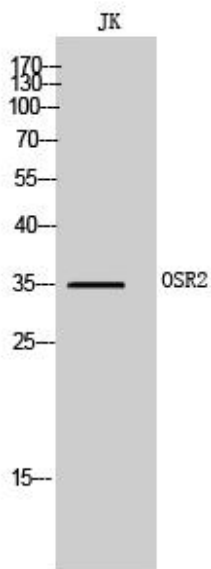


OSR2 Polyclonal Antibody

Catalog No	YP-Ab-01930
Isotype	IgG
Reactivity	Human;Mouse;Rat
Applications	WB;ELISA
Gene Name	OSR2
Protein Name	Protein odd-skipped-related 2
Immunogen	Synthesized peptide derived from OSR2 . at AA range: 60-140
Specificity	OSR2 Polyclonal Antibody detects endogenous levels of OSR2 protein.
Formulation	Liquid in PBS containing 50% glycerol, 0.5% BSA and 0.02% sodium azide.
Source	Polyclonal, Rabbit,IgG
Purification	The antibody was affinity-purified from rabbit antiserum by affinity-chromatography using epitope-specific immunogen.
Dilution	Western Blot: 1/500 - 1/2000. ELISA: 1/40000. Not yet tested in other applications.
Concentration	1 mg/ml
Purity	≥90%
Storage Stability	-20°C/1 year
Synonyms	OSR2; Protein odd-skipped-related 2
Observed Band	35kD
Cell Pathway	Nucleus .
Tissue Specificity	Embryo,Kidney,
Function	similarity:Belongs to the Odd C2H2-type zinc-finger protein family.,similarity:Contains 5 C2H2-type zinc fingers.,
Background	odd-skipped related transciption factor 2(OSR2) Homo sapiens OSR2 is a mammalian homolog of the Drosophila odd-skipped family of transcription factors (Lan et al., 2004 [PubMed 15175245]).[supplied by OMIM, Mar 2008],
matters needing attention	Avoid repeated freezing and thawing!
Usage suggestions	This product can be used in immunological reaction related experiments. For more information, please consult technical personnel.



Products Images



Western Blot analysis of JK cells using OSR2 Polyclonal Antibody cells nucleus extracted by Minute TM Cytoplasmic and Nuclear Fractionation kit (SC-003, Inventbiotech, MN, USA).